

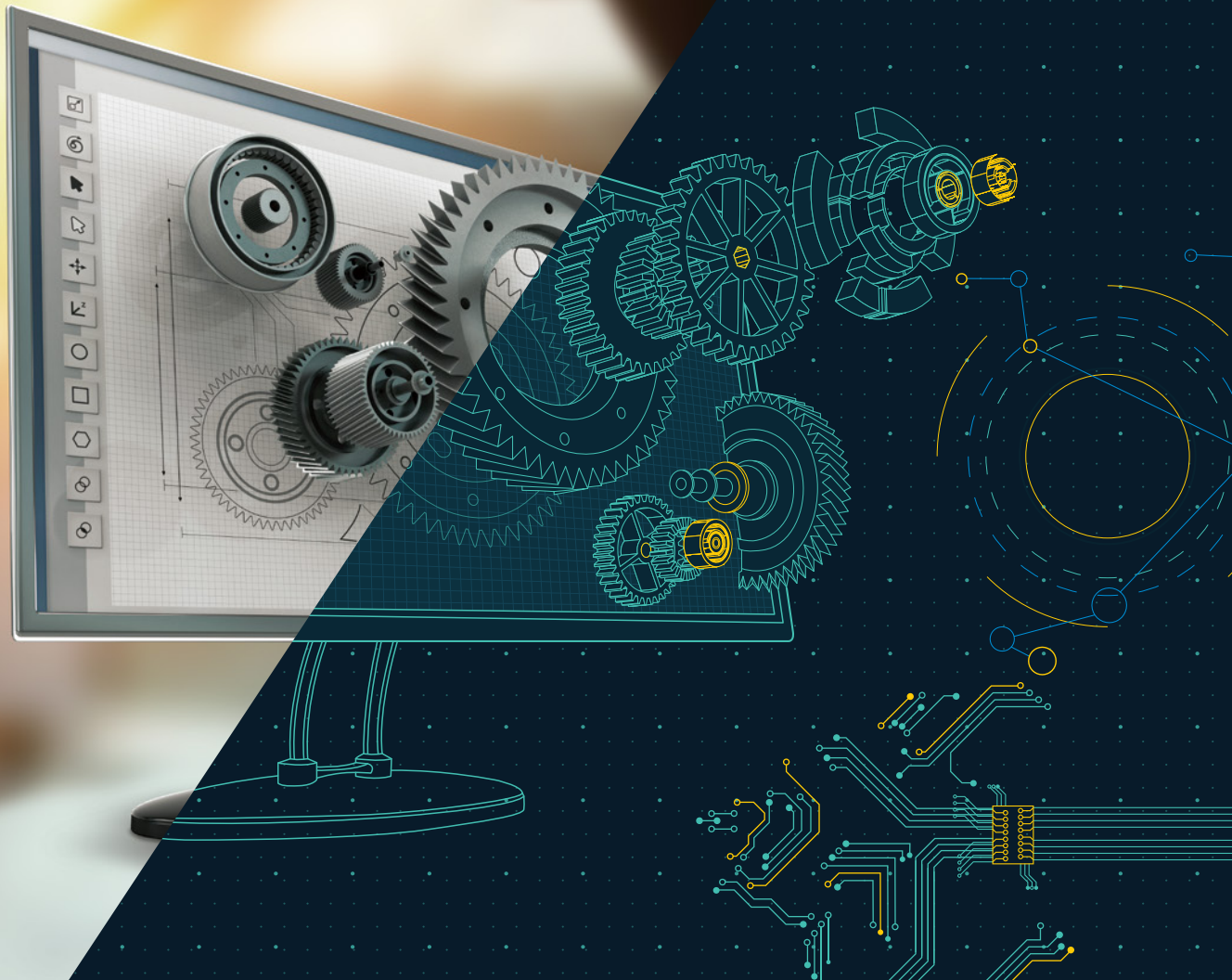


L&T Technology Services

www.LTTS.com



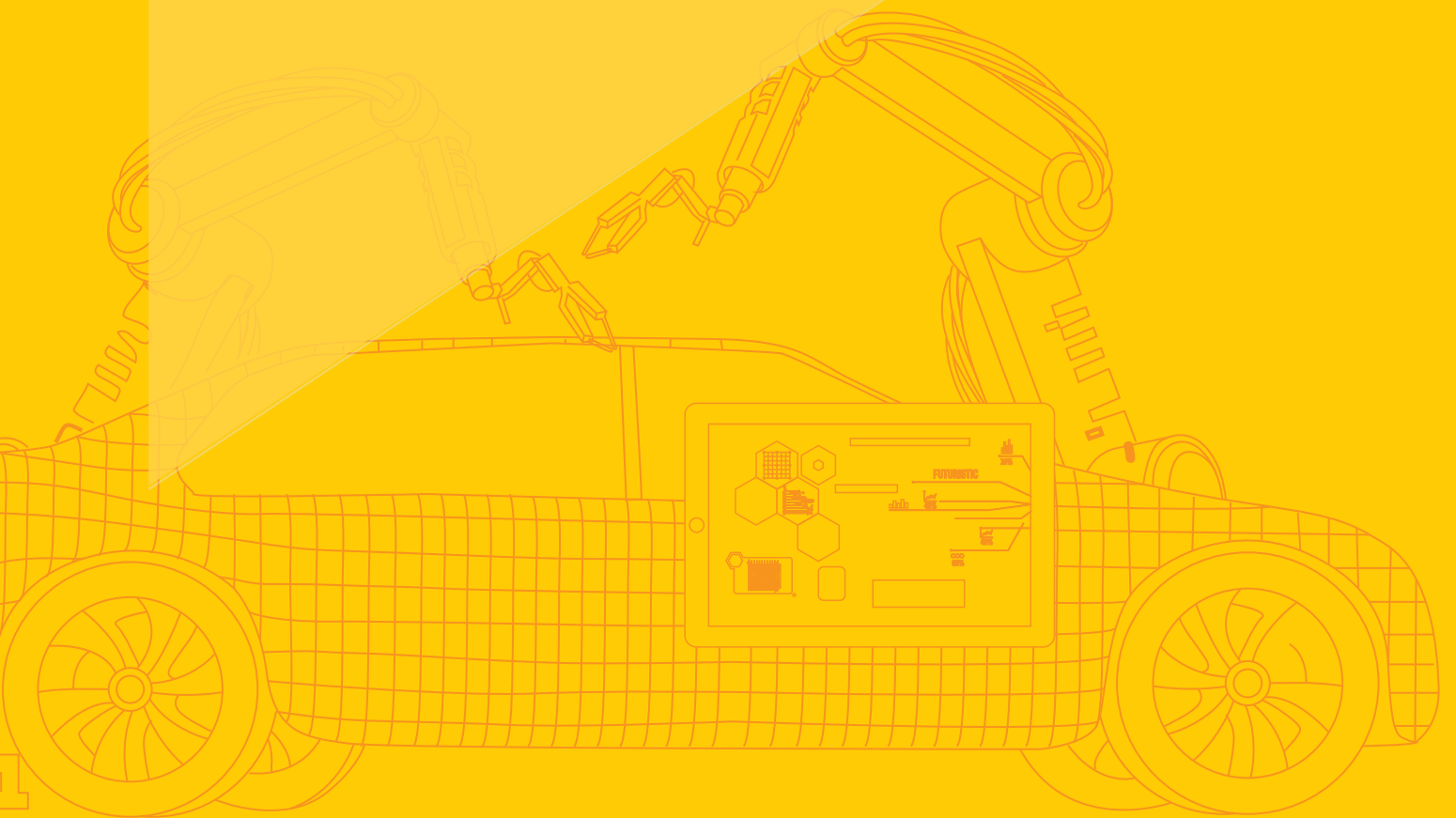
# ENGINEERING THE CHANGE



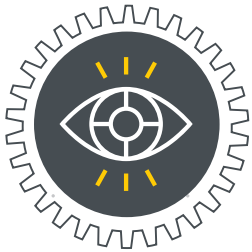
# FOREWORD

Driven by digital disruptions, market dynamics are changing at an unprecedented pace. Smart transitions, cognitive learning, speed of innovation, and technology of everything have become imperative for success.

L&T Technology Services is pushing the frontiers of technology and creating new possibilities to engineer the change for a smarter world.



# WE ARE THE ONLY INDIAN PURE PLAY ENGINEERING R&D COMPANY



## OUR VALUES

- ◆ Ethical conduct and respect for individual and diversified global talent.
- ◆ Social harmony and peaceful existence.

## OUR MISSION

- ◆ We aim to be the best, lead the curve, nurture brilliance, obsess about customer delight, and become the only partner of choice for our stakeholders.

## OUR VISION

- ◆ To be the technology explorers, engineering better products, services, and life.
- ◆ To be amongst the top 10 global engineering services companies in the world.





## TRANSFORMATION

### The World's First

- ◆ Smartest Campus
- ◆ Autonomous Welding Robot
- ◆ Commercial Mesh Network for Utilities



## SPEED

- ◆ **502** Patents
- ◆ **51** R&D Labs
- ◆ **30+** Digital Frameworks



## SKILLS

- ◆ Leading Player in Embedded Applications
- ◆ **3500+** Engineers in Digital Technologies
- ◆ **33%** Share of Digital Revenues

**69**

Fortune 500 Companies as Customers

**53**

Clients from Global 100 R&D Spenders

**90%**

Repeat Business

**16,883**

EMPLOYEES  
ACROSS THE GLOBE



**270**

GLOBAL CLIENTS



**17**

GLOBAL  
DESIGN CENTERS



**502**

PATENTS



**28**

GLOBAL  
SALES OFFICES



# ORCHESTRATING THE FUTURE IN THIS DIGITALLY ENABLED DYNAMIC WORLD

**5X Growth**

by Digital Leaders

*Source: McKinsey Digital Quotient®, Capital IQ*



**36% Prefer Personalization**

Creating a Market-of-One

*Source: The Deloitte Consumer Review*



**22% Faster Time to Market**

Through Digital Business Models

*Source: BCG Research*



**20.4 Billion Connected Things**

Poised to Change the World as We Know It by 2020

*Source: Gartner Research*



**73% Value Sustainability**

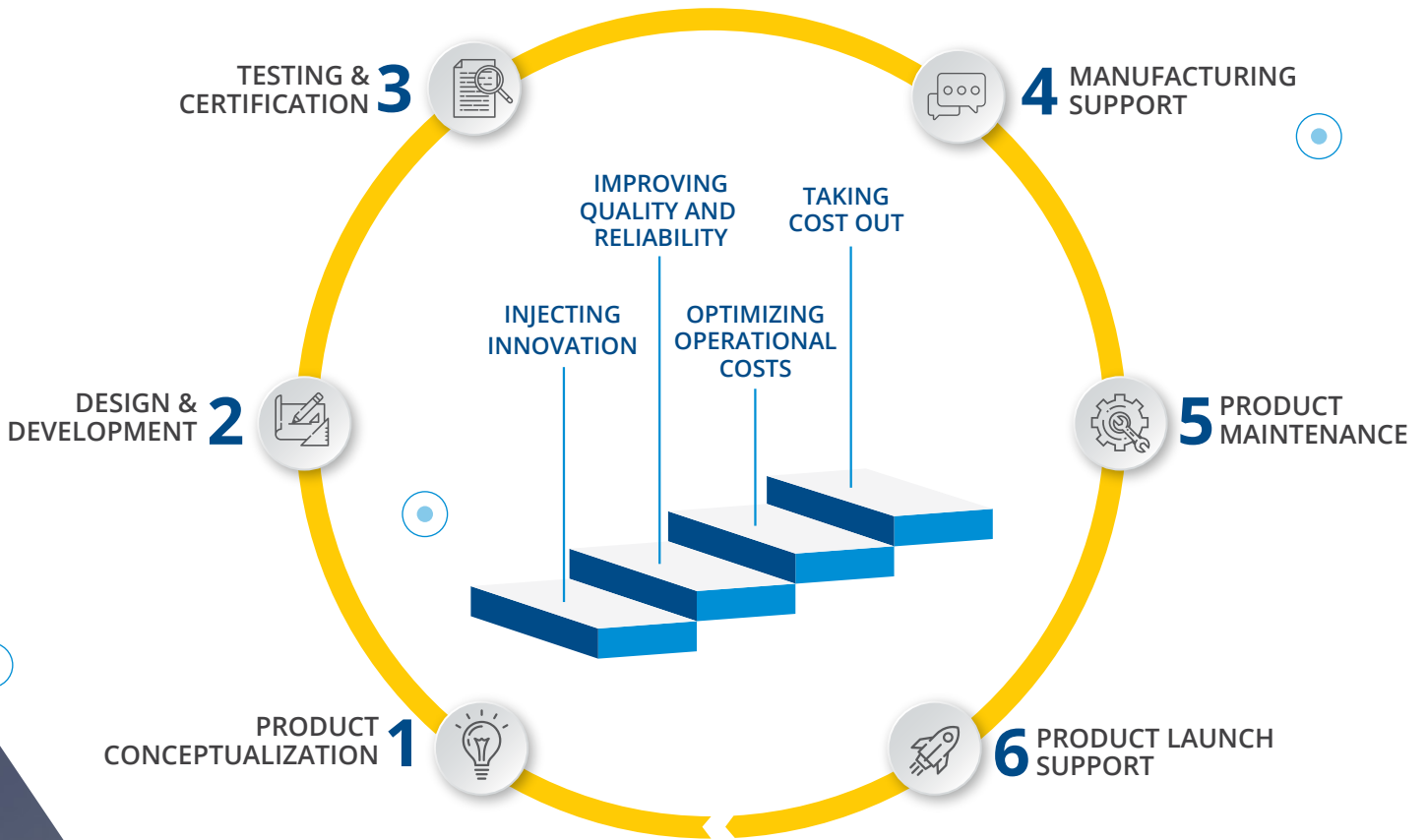
Increasing the Need to Create Eco-Friendly Products and Services

*Source: Nielsen Research*





# SUPPORTING END TO END PRODUCT LIFECYCLE



## L&T TECHNOLOGY SERVICES

# TRANSFORMING INDUSTRIES THROUGH CROSS-POLLINNOVATION AND STRATEGIC COLLABORATIONS

Dedicated innovation labs, powered by hundreds of specialists, create solutions across multiple industries.



## INDUSTRY-SPECIFIC LABS

Auto Lab, Medical Lab,  
Industrial Products Lab,  
TCES Solutions Lab



## COMPLIANCE TESTING LABS

Material Testing Lab, Wet Lab,  
EMI/EMC Lab, RF Lab, Applied  
Physical Metrology Lab, Mixed  
Signal Hardware Lab



## TECHNOLOGY LABS

IoT Lab, Smart  
Manufacturing Lab, Optics  
Lab, Power Electronics Lab,  
Tear Down Lab

## FOCUSING ON COMPREHENSIVE QUALITY MANAGEMENT

- ◆ Appraised at Maturity Level 5 on the Capability Maturity Model Integration (CMMI) – DEV, v1.3
- ◆ AS9100D Certified Aerospace Practices
- ◆ ISO 13485:2016 Certified Medical Devices
- ◆ ISO 9001:2015 Certified Delivery Centers
- ◆ ITAR Compliant State-of-the-art Facilities in the US and INDIA
- ◆ ISO/IEC 27001:2013 – Certification for Design and Development



# ENGINEERING THE CHANGE ACROSS INDUSTRIES

## AEROSPACE ENGINEERING



- ◆ Aerostructures | Aero Systems  
Aero Engines | Avionics
- ◆ Aftermarket Service
- ◆ ATE & Test Engineering
- ◆ Electronics Engineering
- ◆ Mechanical & Structural Engineering
- ◆ Software Engineering
- ◆ Testing and Validation Services
- ◆ Inflight Entertainment
- ◆ Drones

## AUTOMOTIVE



- ◆ Autonomous Driving
- ◆ Electrification
- ◆ Design & Development
- ◆ Software Implementation
- ◆ Product Conceptualization
- ◆ Testing and Validation Services
- ◆ Manufacturing Engineering
- ◆ Value Engineering & Product Sustenance

## CONSUMER ELECTRONICS



- ◆ Mobility
- ◆ Ruggedization
- ◆ Wearables
- ◆ Security

## MEDICAL DEVICES



- ◆ Connected Healthcare
- ◆ Remote Diagnostics
- ◆ Hybrid Imaging
- ◆ Code of Federal Regulations  
(CFR) Part 11 Compliance

## INDUSTRIAL PRODUCTS



- ◆ Smart Buildings
- ◆ Automation
- ◆ Machine Vision
- ◆ Industrial Protocols
- ◆ High Power Density



## MEDIA AND ENTERTAINMENT



- ◆ OTT
- ◆ Android TV
- ◆ Smart Home
- ◆ On-demand TV
- ◆ Voice Recognition
- ◆ Media Personalization

## PLANT ENGINEERING



- ◆ Industry 4.0
- ◆ Smart Manufacturing
- ◆ Plant Digitalization
- ◆ Design & Engineering
- ◆ Greenfield & Brownfield Consulting
- ◆ Operational Maintenance

## SEMICONDUCTORS



- ◆ VLSI
- ◆ Platform Software
- ◆ Board Design
- ◆ Chip Qualification

## RAIL TRANSPORTATION



- ◆ Digitalization and Train Control
- ◆ System Assurance and RAMS [Reliability, Availability, Maintainability, and Safety]
- ◆ Train Design and Innovation
- ◆ Rail Signaling

## TRUCKS AND OFF-HIGHWAY VEHICLES



- ◆ Sustainance Engineering
- ◆ Model-Based Software Development
- ◆ AUTOSAR and Functional Safety
- ◆ Hybridization
- ◆ Electrification
- ◆ Predictive Maintenance & E-Servicing
- ◆ Real-Time Fleet Tracking

## TELECOMMUNICATIONS



- ◆ 5G
- ◆ NB-IoT
- ◆ Software Defined Networking (SDN)/ Network Function Virtualization (NFV)
- ◆ Automated Testing

# INVESTING IN BEST-OF-THE-BREED TECHNOLOGIES



## EMBEDDED SYSTEM AND APPLICATIONS

- ◆ More than 70 successful tape-outs of up to 28nm, including low-power designs
- ◆ Unique multi-location test automation solution to enable parallel execution of test cases and reduce cycle time by 50%
- ◆ In house FD-LTE lab with live radiating network



## MECHANICAL ENGINEERING

- ◆ 40+ customized domain-specific capabilities encompassing idea generation, implementation, and diffusion as well as product development and aftermarket support
- ◆ Proven track record of minimizing costs and cycle times
- ◆ Highly skilled engineers, advanced processes, and top-of-the-line systems and tools



## SMART MANUFACTURING SERVICES

- ◆ PLC, DCS, SCADA, and MES based automation for manufacturing processes and operations
- ◆ Integrated Manufacturing and Asset Management Services
- ◆ Mobility, Augmented Reality, and Advanced Analytics applications



## SMART PRODUCTS AND SERVICES

- ◆ UBIQWeise 2.0™ platform for quick deployment and no lock-ins
- ◆ Deep knowledge in engineering enabling customized processes for design, test, and roll-out across multiple industry verticals
- ◆ i-BEMS - Intelligent Building Energy Management System is designed to help save up to 40% of facility energy costs

# DELIVERING DISRUPTIVE SOLUTIONS



## INTELLIGENT BUILDING ENERGY MANAGEMENT SYSTEM (i-BEMS)

- ◆ Reduce building energy usage by up to 15% and ensure return on investment within three years of deployment
- ◆ Gain visibility into the operation of those 20% building systems that contribute 80% towards energy consumption



## UBIQWeise 2.0

- ◆ UBIQWeise 2.0™, L&T Technology Services proprietary cloud IoT platform, is built to empower our customers rapidly customize and seamlessly deploy IoT products. The built-in rules engine supports stream processing to generate business insights in real time



## WAGESAPP

- ◆ Comprehensive, data-driven utility conservation programs to reduce OPEX
- ◆ Benchmark utility consumption across plant locations to identify utility conservation best practices



## AiKno™

- ◆ Cognitive intelligence framework which combines contextual intelligence and AI, enabling customers to develop a range of digital virtual agents, problem solving applications, and robotic process automations. LTTS' AiKno™ framework was selected as one of the Top 50 use cases in the NASSCOM Artificial Intelligence Game Changer Awards 2018



## nBon

- ◆ 3GPP Release 14 compliant Cat NB1 reference protocol stack (L1/L2/L3) for IoT low data rate devices
- ◆ Designed with low memory and low power footprint enabling Seamless integration with custom target platforms



## ServiceIQ

- ◆ Extend services and issue reporting capabilities using customized, modular system plug-ins
- ◆ Enhance productivity and operating efficiency by mapping and allocating service requests based on the field agent's location



## COGMATION

- ◆ LTTS' Cogmation is an in-house Test Automation Framework developed for multiplatform and multidevice automation. It integrates various test components, based on the unique device and platform configurations, and provides results powered by internal validation algorithms. Cogmation comes pre-bundled with an A-V analysis tool.

# STAYING A STEP AHEAD OF THE WAVE OF DISRUPTION

## WE ARE INVESTING IN THE FUTURE ENGINEERING FOR A SMARTER WORLD



### NEXT STAGE

It's time to engineer the change, redefine business models, and transform products into services



### 2015-2017

Transitioned into the role of a business enabler for customers with improved operational and organizational structure



### 2012-2015

Invested in solutions and acquisitions to enhance performance, agility, and capabilities



### 2009-2012

Built synergy across multiple business units to deliver consistent and best-in-class processes



### PRE-2009

Focused on reducing the unit factor cost thus enabling customers to increase profit margins



# AND CREATING IMPACT THAT MATTERS



## 502 PATENTS AND COUNTING

- ◆ 365 are co-authored with customers and the rest are filed by LTTS.

## SPARK - INNOVATION MANAGEMENT PLATFORM

- ◆ Accelerates the project team's ability to solve problems creatively
- ◆ Reduces redundancy by checking for IP, plagiarism, and infringement



## ENGINEERING INNOVATORS FOR TOMORROW

- ◆ **19000** Students
- ◆ **500+** Faculty
- ◆ **270** Institutes Participating
- ◆ **68** Innovative PoCs
- ◆ **2000+** Concepts Submitted

## TECHPANORAMA™

A cross-pollination initiative, TechPanorama™ serves as a platform for our employees to showcase their creative skills and demonstrate ideas for new solutions, processes, and technologies.





# RECOGNIZED BY THE INDUSTRY LEADERS



“Company of the Year” & “Green Office Space of the Year” award by Indo-American Chamber of Commerce & the American Consulate General



Awarded the Golden Peacock National Quality Award & Golden Peacock Innovative Product & Service Award



LTTS in the Winners Circle for Embedded & Semiconductor Engg. Services and Automotive Engineering Services



LTTS was recognized among the top 5 global organizations for social media marketing by the US-based CFX Faxies, a premiere US awards agency



LTTS wins Businessworld magazine’s 3<sup>rd</sup> HR Excellence Awards



Rated as one of the most Innovative Indian Companies



Zinnov positions LTTS in Leadership Zone for IoT across 10 verticals



Global Engineering Productivity Improvement Award & Gold Supplier awarded by UTC



LTTS positioned as a leader in the IoT-Neat survey

## CMMI DEVELOPMENT V 2.0

LTTS was appraised with Maturity Level 5, the highest capability maturity level in the CMMI framework

# RECOGNIZED BY THE INDUSTRY LEADERS

## Gartner

Recognized by Gartner among "Key vendors in the IoT embedded space"



Received The Golden Globe Tigers Award for Excellence in Training & Development



Quality Excellence Award in Product Development at the World Quality Congress Function

## EMC<sup>2</sup>

IT: EMC Transformation Award & "Dataquest Business Technology Award" in the Analytics category

## DAIMLER

Innovation Award from Daimler

## NASSCOM<sup>®</sup>

LTTS wins Digital Skills Award for transformation program for digital re-skilling



LTTS wins World Quality Congress Award for Quality Excellence in Planning, Processes & Systems



LTTS named as Best Design and Engineering Company in the Infotech Forum Awards 2019



LTTS conferred with Performance Excellence award by Honda in 2019



# WHAT OUR CUSTOMERS SAY

## REINFORCING #EngineeringTheChange



**DOMINIK SCHNEITER**  
VP, R&D,  
WINTERTHUR GAS AND DIESEL

BY BRINGING **TRANSFORMATIVE IDEAS FROM OTHER** INDUSTRIES, L&T TECHNOLOGY SERVICES' INNOVATIONS HELPED US REDUCE **LEAD TIME TO MARKET** AND SAVE OVER **\$1 MILLION** EVERY YEAR.

WORLD CLASS **ENGINEERING**, **CROSS VERTICAL** INDUSTRY EXPERTISE, STATE-OF-THE-ART **INFRASTRUCTURE** AND **RAPID TURNAROUND** CAPABILITIES MAKE LTTS OUR KEY **STRATEGIC PARTNER**.



**SUJEET CHAND**  
CTO,  
ROCKWELL AUTOMATION

OUR **PARTNERSHIP** REPRESENTS THE COMING **TOGETHER** OF TWO **GLOBAL** COMPANIES!



**EMMANUEL DE ROQUEFEUIL**  
Country Director,  
THALES



**HIROAKI IWAMITSU**  
Managing Executive Officer,  
KOBELCO

“ WE WORK WITH LTTS TO BUILD  
ADVANCED TECHNOLOGICAL CAPABILITIES  
IN AREAS SUCH AS **IoT, AUTOMATION** AND  
**REMOTE SENSING**. LTTS IS NOT JUST AN  
ENGINEERING COMPANY, BUT THE **BEST**  
**TECHNOLOGY PARTNER** WE HAVE! ”

“ WITH **ENGINEERING FOCUS FIRST**,  
L&T TECHNOLOGY SERVICES HAS BEEN  
ABLE TO DELIVER **NEW INNOVATIVE PRODUCTS**.  
THEY ALWAYS COME UP WITH RESOURCES  
AND SOLUTIONS THAT ARE  
**BEYOND OUR EXPECTATIONS**. ”



**MIKE MCDONALD**  
Director Engineering,  
AEI



**VIKRAM BHATT**  
Film Producer & Director

“ LTTS AND **VBontheWeb**  
SEE A **GREAT FUTURE** TOGETHER.  
WE ARE IN THE **BEST HANDS** AS FAR AS  
**TECHNOLOGY** IS CONCERNED! ”

# LET'S ENGINEER THE BLUEPRINT OF TOMORROW

## LET'S ENGINEER THE CHANGE

### POWERING THE SMART CITIES

Using Digital Engineering

Smart mesh for grids improved power distribution, reduced theft, and minimized downtime for a North American Utility Partner

### CREATING CONNECTED PLANTS

Using Smart Manufacturing & Operations

Enabled critical process monitoring and remote surveillance of plant assets with intelligent automation solutions

### MAKING MACHINES INTELLIGENT

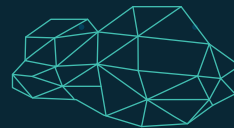
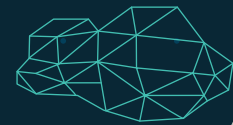
Using Perceptual Engineering

Developed a welding machine that learns machine usage patterns to improve productivity

### INNOVATING FOR TOMORROW

Using Pervasive Technologies

Helped a major European OEM create the next generation of electric and hybrid vehicles









 Headquarters

 Offices

 Delivery Centre

India | USA | Canada | Germany | Belgium | Denmark | Finland | France | Italy | Israel  
Netherlands | Norway | Poland | Sweden | United Kingdom | UAE  
Japan | South Korea | Singapore | Malaysia | South Africa | Australia

 *L&T Technology Services*

 **ENGINEERING THE CHANGE** 