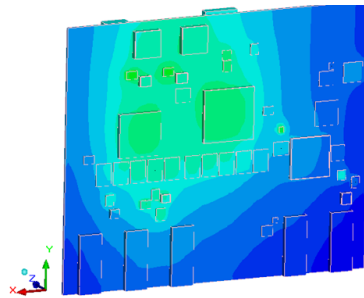
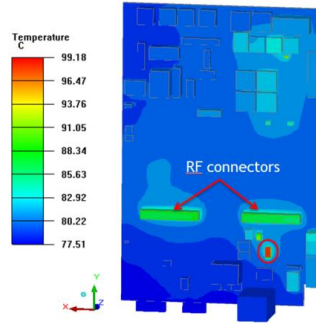
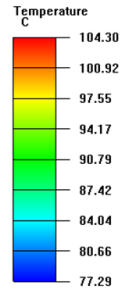


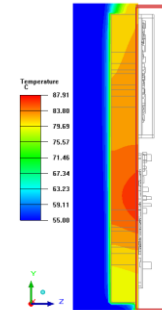
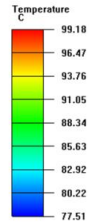
THERMAL ANALYSIS OPTIMIZATION OF BROADBAND WIRELESS ENCLOSURE



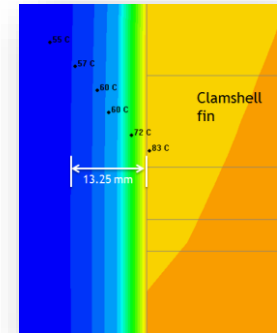
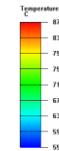
Baseband board



Radio board



Solar shield placement



SCOPE

- // To perform steady state natural convection thermal analysis of the system to analyze the junction temperatures on critical components

HIGHLIGHT

- // Radiation is critical in natural convective phenomena: DO model was used
- // Enclosure optimization : 16% length reduction, 8% height reduction and 50% weight reduction
- // Better thermal pads were suggested
- // Clamshell fins were optimized.

