



Purposeful.  
Agile.  
Innovation.

# INVESTOR PRESENTATION



April 2026

# Disclaimer

---

This presentation is issued by L&T Technology Services Limited (the “**Company**”) for general information purposes only, without regard to specific objectives, suitability, financial situations and needs of any particular person. This presentation does not constitute or form part of any offer or invitation or inducement to sell or issue, or any solicitation of any offer to purchase or subscribe for, any securities of the Company, nor shall it or any part of it or the fact of its distribution form the basis of, or be relied on in connection with, any contract or commitment whatsoever. No person is authorized to give any information or to make any representation not contained in or inconsistent with this presentation and if given or made, such information or representation must not be relied upon as having been authorized by any person.

This presentation may include statements which may constitute forward-looking statements. All statements that address expectations or projections about the future, including, but not limited to, statements about the strategy for growth, business development, market position, expenditures, and financial results, are forward looking statements. Forward looking statements are based on certain assumptions and expectations of future events. This presentation should not be relied upon as a recommendation or forecast by the Company. Please note that the past performance of the Company is not, and should not be considered as, indicative of future results. The Company cannot guarantee that these assumptions and expectations are accurate or will be realised. The actual results, performance or achievements, could thus differ materially from those projected in any such forward-looking statements. The Company does not undertake to revise any forward-looking statement that may be made from time to time by or on behalf of the Company. Given these risks, uncertainties and other factors, viewers of this presentation are cautioned not to place undue reliance on these forward-looking statements.

This presentation may not be copied or disseminated, in whole or in part, and in any manner or for any purpose. No person is authorized to give any information or to make any representation not contained in or inconsistent with this presentation and if given or made, such information or representation must not be relied upon as having been authorized by any person. Failure to comply with this restriction may constitute a violation of applicable laws.

The information contained in these materials has not been independently verified. None of the Company, its Directors, Promoter or affiliates, nor any of its or their respective employees, advisers or representatives or any other person accepts any responsibility or liability whatsoever, whether arising in tort, contract or otherwise, for any errors, omissions or inaccuracies in such information or opinions or for any loss, cost or damage suffered or incurred howsoever arising, directly or indirectly, from any use of this document or its contents or otherwise in connection with this document, and makes no representation or warranty, express or implied, for the contents of this document including its accuracy, fairness, completeness or verification or for any other statement made or purported to be made by any of them, or on behalf of them, and nothing in this presentation shall be relied upon as a promise or representation in this respect, whether as to the past or the future. The information and opinions contained in this presentation are current, and if not stated otherwise, as of the date of this presentation. The Company undertakes no obligation to update or revise any information or the opinions expressed in this presentation as a result of new information, future events or otherwise. Any opinions or information expressed in this presentation are subject to change without notice.

## Top 3 Global Pure-play AI, Digital and ER&D Consulting Services Company



\*Data as of Q4 FY26



Multi-domain & multi-vertical expertise

State-of-the-art innovation labs

Creator of many world's 1<sup>st</sup> products & solutions

Best workplace for Engineer at Heart ❤️

Engineering Idea to Reality (I2R)

# Trusted Digital Engineering & Technology Partner – Chip to Cloud



**Chips**



**Digital Products & Processes**



**Platforms**

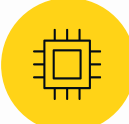
Complex SoC Design

Embedded H/W & S/W Development


Product & System Development

IT/OT Interoperability

Digital Transformation & Cloud Migration




**SOC & System Design**




**Devices Development**



**Product Dev. & Testing**



**Digital Mfg.**



**Digital Solutions**

**Embedded System & Chip Design**

**AI & Software Defined Everything**

**Cybersecurity, Data & Experience Mgmt.**

**Factory of the Future**

**Strength by Industry Vertical**



**Mobility**

**6**  
of the Top 10  
*Global Automotive majors*

**7**  
of the Top 10  
*Trucks and Off-Highway*

---



**Sustainability**

**Industrial Products**

**8**  
of the Top 10  
*Global Automation Conglomerates*

**6**  
of the Top 10  
*Building Tech Organizations*

**Plant Engineering**

**7**  
of the Top 10  
*Consumer Goods Brands*

**5**  
of the Top 5  
*Global O&G majors*

---



**Tech**

**6**  
of the Top 10  
*Media & Consumer companies*

**6**  
of the Top 10  
*Semcon companies*

**4**  
of the Top 5  
*Hyperscalers*

**Medtech**

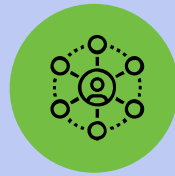
**10**  
of the Top 10  
*Medtech device companies*

# What Sets us Apart

## Our Key Differentiators



**Engineering  
DNA**



**Multi  
Domain  
Expertise**



**State-of-art  
Research  
& Test Labs**

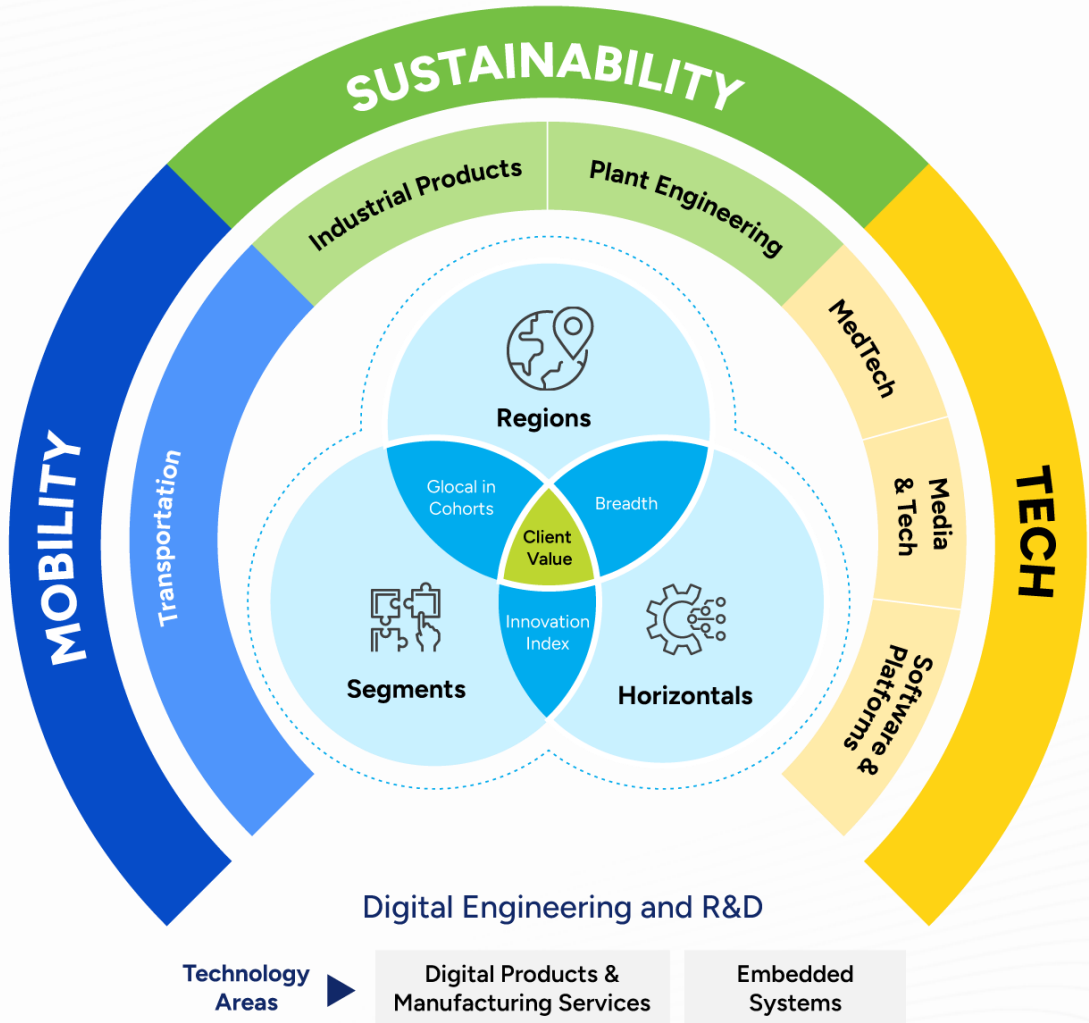


**Translating  
Innovation to  
Engineering**



**Marquee  
Customer  
Base**

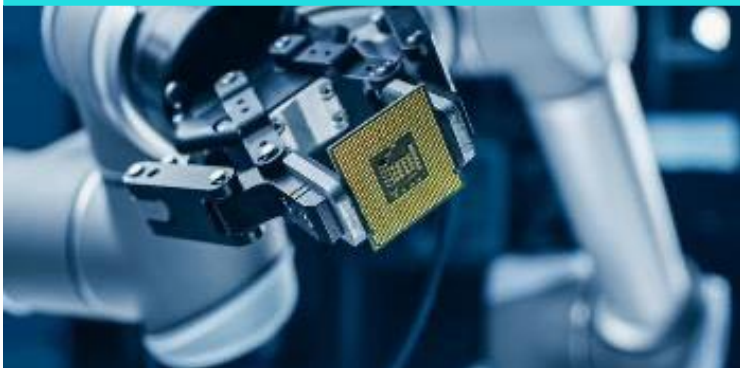
# “Go Deeper to Scale” Strategy...



# Creating Customer Value via Cross-Pollination



By bringing transformative ideas from other industries, LTTS' Innovations helped us reduce lead time to market.



5G TCU Testing from our Hi-Tech Segment for a Transportation Customer



Battery operated Autonomous Welding Robot from Industrial Products for a Plant Engineering manufacturer



Annotation Technology from Transportation being used for Imaging Medical Radiology

# Fueling Innovation with Culture of Patents



World's 1st motion activated screwdriver – **patented latch mechanism**



**Patented multi-voltage booster technology** for welding power source



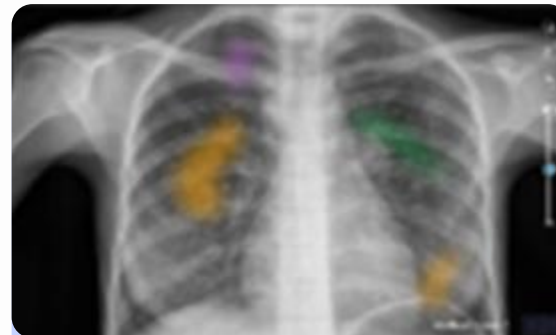
**Portable vibration analyzer**  
**3 patents**, winner of golden product award



**TrackEi™ - Patented Hybrid AI model-based** railway inspection at travel speed of 100 Kmph



Machine Vision System for product packaging - **patented technology for leakage detection**



**Patented AI enabled Chest X-Ray Analysis** Radiology assist solution with Automatic report generation



**1,706**  
**PATENTS**

**235+**  
**PATENTS**  
**IN AI**



# Nurturing every “Engineer at Heart ❤️” for Inclusive Growth

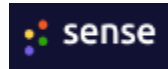
## Grooming Young Technocrats for Tomorrow



## Talent-on-Tap Recruitment Engine

### Innovative Recruitment Model

- AI enabled Hiring platform
- “In plant” recruiters from vendor



### Talent Brand Building

- Strong Talent branding among Talent communities
- Platforms to spot Tech talent



### Fresher Hiring

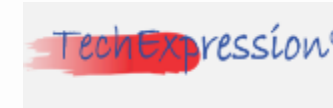
- Targeted hiring from Top 100 Campuses



## Proliferating a Culture of Innovation and providing a Tech-track for Growth



Open Innovation initiative



Bringing The Technical Prowess To the Front



Knowledge Sharing Platform



A Collaboration Platform To Foster & Showcase Innovation



Addressing Industry Challenges from Seasoned Professionals & SMEs



AI Hackathon on Next Gen Technologies

## GEA: Building Cross-Domain Engineers at Scale



# Leading across Emerging Technology Areas & Verticals

## Top 3

Global Pure-play AI, Digital and ER&D Consulting Services Company



### Leading Edge in Emerging Tech Areas

Digital Engineering

Among Top 5 ESPs

ADAS

Among Top 3 ESPs

Digital Thread

Among Top 3 ESPs

IoT

Among Top 4 ESPs

AI Engineering

Among Top 5 ESPs

### Leading Edge in Vertical Positioning

Aerospace

Among Top 5 ER&D players

Auto

Among Top 4 in competency

Medical

Among the Top 2 in competency

Telecom

Among the Top 4 ESP

Industrial

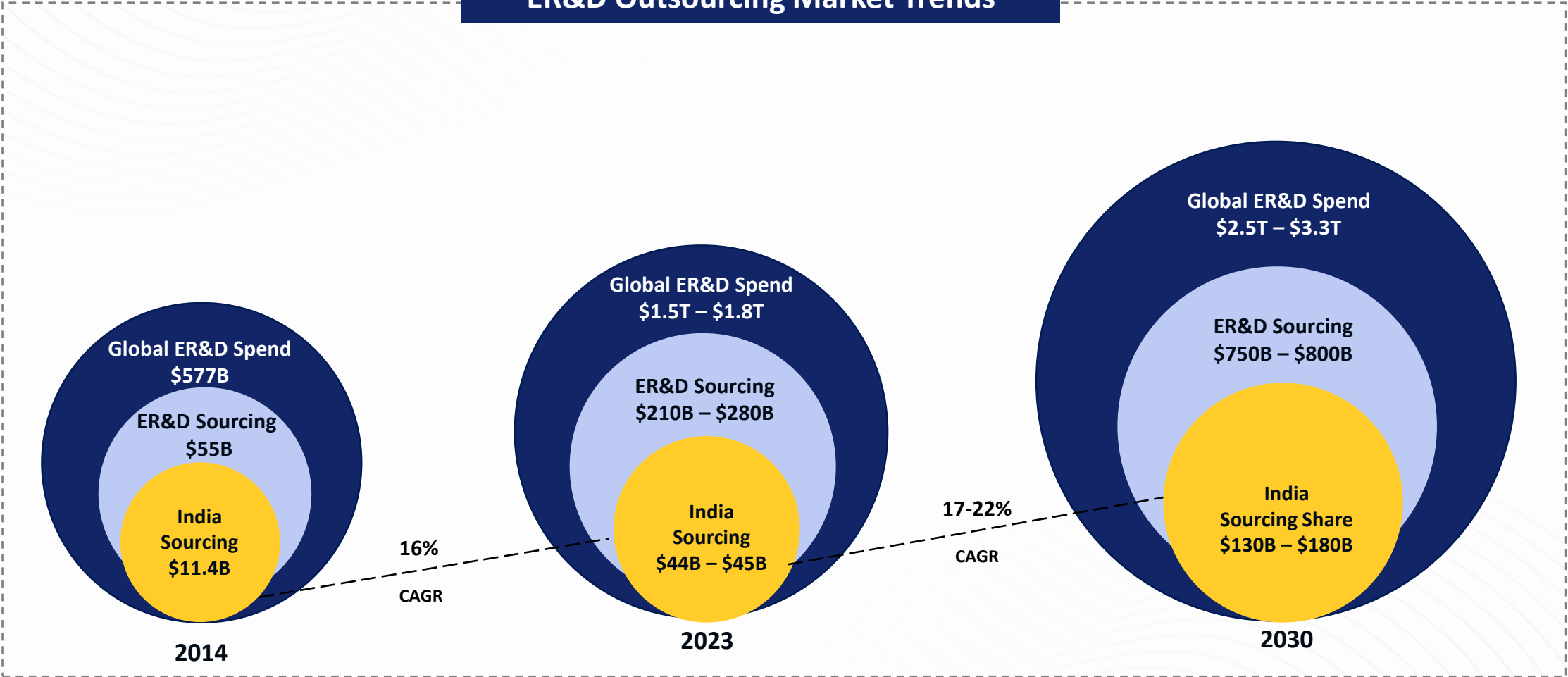
Maintained Top 2 position

\*ESP – Engineering Service Provider



# Our Playing Field

## ER&D Outsourcing Market Trends



# Journey to FY31

## What We Believe In, How We Lead



### VISION

Engineering a sustainable tomorrow through technology and innovation



### MISSION

Be the engineering partner of choice by enabling innovation with world-class technologies, processes, and people – delivering inclusive growth for all stakeholders



### VALUES

- Being Purposeful
- A Culture of Learning
- Ethics & Integrity
- Results with Accountability
- Caring

## #1 Player in Areas Where We Play

Pivot on Growth | Move From Better to Best

*Engineering Intelligence (EI)*



# Emerging Technologies across LTTS Segments

		Segment Growth Drivers/Themes		
MOBILITY	Automotive	SDV, AD-ADAS	Vehicle Engineering	AI PDLC optimization
	Trucks & Off-Highway	SDM & Autonomy, HW Ready Solution	Localization- India for Global Market	Manufacturing & Logistic Automation
	Aero & Rail	Defense Spend Demand for MRO	Ops Excellence - Delivery Assurance	AI Driven Predictive Analytics
SUSTAINABILITY	Oil & Gas, Chemicals	HVEC model for Engineering	Sustainability focus	Digital adoption
	CPG	Demand for CPG products	Go Local - Asia	Value Chain Digitization
	Industrial M/c & Building Technology	Data Centers & Giga-Factories	Energy efficient Machinery	AI & Machine Vision enabled Robots
	Electrical Controls & Power	Renewable/Clean Energy Demand	Grid Modernization / Energy Storage	AI based smart Power management
TECH	MedTech	AI powdered connected Devices	Advisory led Digital/AI Transformation	AI first NPI/LCM transformation
	M&T	Silicon Design	AI Compute & infrastructure	AI led Operations & Product Sustenance
	Software & Platforms	Data Engineering	Platform Engineering	Agentic AI

## Cross Segment Themes

Engineering Intelligence (EI)

SDx and Next Gen SW

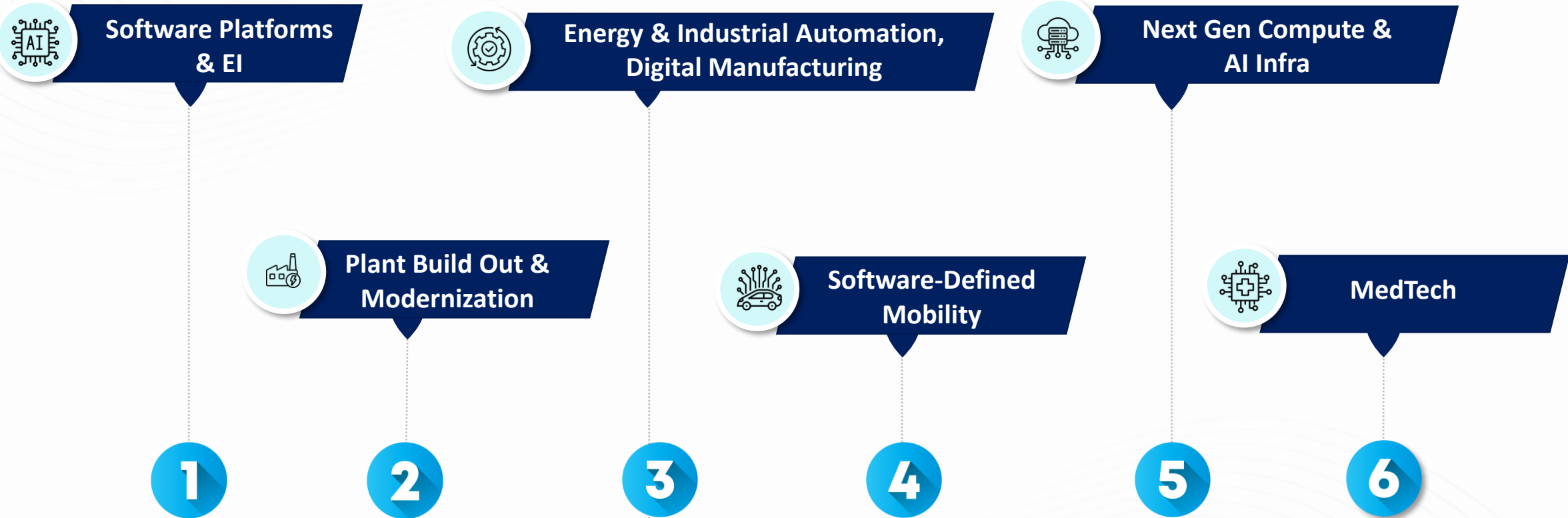
Data Center Compute

Re-Industrialization of US

Edge & Emb HW

Consolidation & Transformation Deals

# Our Six Big Bets



Where we Invest, Innovate and Differentiate

# LTTS Engineering Intelligence (EI) Platform

235+

AI Patents filed

## Gen AI

### Project Lightspeed



### AiTest

AI Framework for PDLC Use Cases

AI enabled Test solution for s/w applications & platforms



AI-powered applications for the SDLC

AI enabled P&ID document management solution



### Nouvis

Rapid GenAI Development Platform

AI enabled Log Analyzer



AI Solution for Code Review and Software Quality Management

AI enabled eBOM management platform

## Agentic AI



AgenticIQ is a Platform designed for AI-enabled autonomous workflows for engineering and manufacturing customer processes

Agent Studio

Agent Market Place

### Data Management/ Migration/ Engineering

Pre-Built Agents

Workflow Builder

A2A Protocol for 3<sup>rd</sup> party App Integration

MCP for 3<sup>rd</sup> party Tools Integration

Mobility

RetailTech

HealthTech

Fintech

Inventory Management and Freight Audit

Loyalty Management Workflow

Patient Clinical Follow-up Management Workflow

Payment Security Workflow

### Predefined Workflow Templates

PDLC

SDLC

EMB

MFG

Industry

IT/OT

### LTTS Solution Integrations

## Physical AI

### TrackEi™

### HumanNoids

Integrated AI-Powered Railway Safety Solution

Intelligent Robotics Solutions for Humanoids

### LightsOutFactory

### EmbedAI

A Framework for Autonomous and Automated Factory Operations

AI framework for embedded systems

### EmbedVIO

### DigitalTwins

AI Framework for ECU Virtualization for SDV

AI enabled Digital Twins for Product, Process and Plants

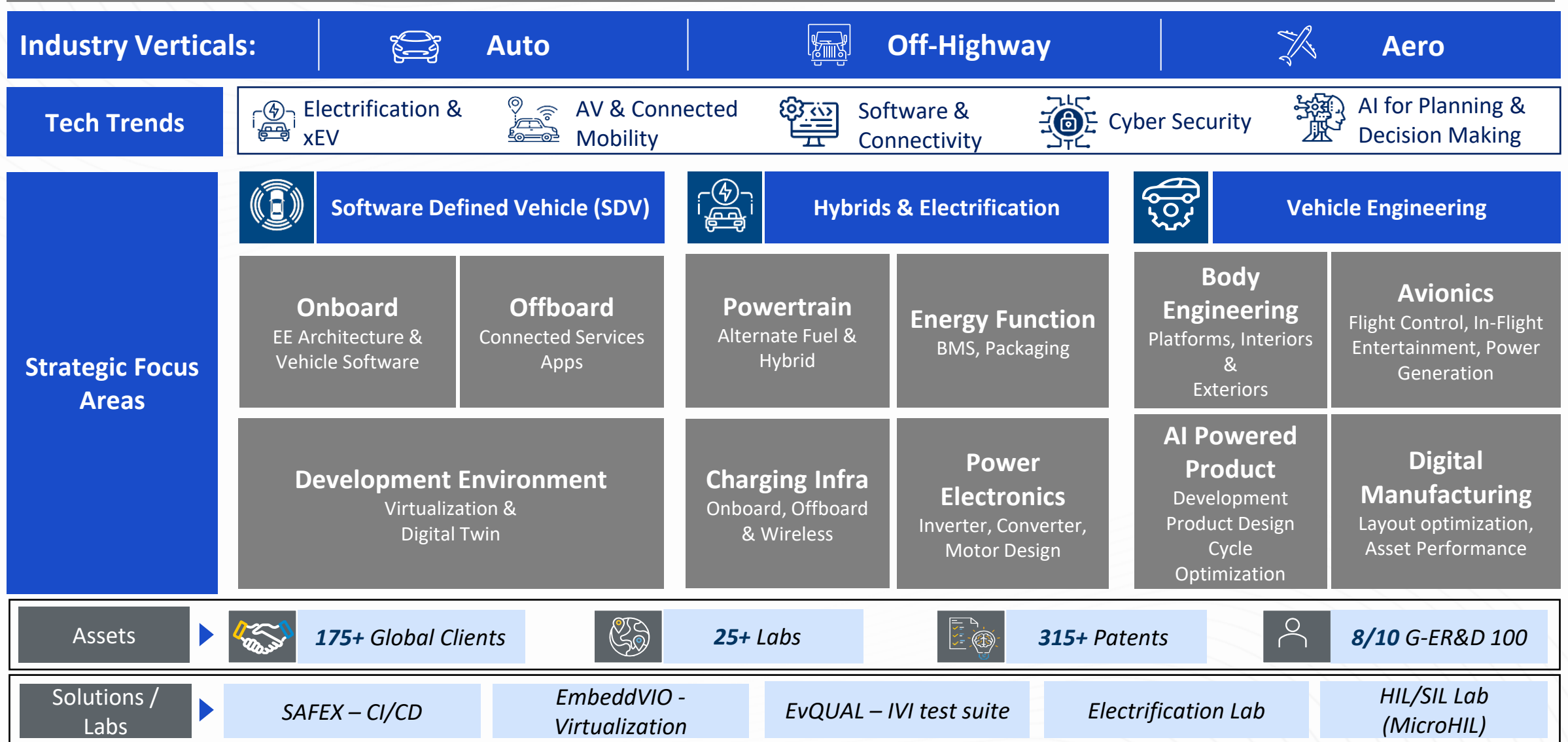
### Sima.ai

AI SoC enabled edge AI solutions

Strategic Partners



# Mobility



# Sustainability

**Industry Verticals:**

- Industrial Machinery & Building Tech.
- Electric, Power & Utilities
- FMCG
- Oil & Gas

**Tech Trends**

- Electrification
- NPD & Product Sustenance
- Robotics & Automation
- Grid Digitalization
- Process & Plant Twins
- Carbon Capture & Circular Economy

Strategic focus areas	Process		Industrial	
	<p><b>Projects Engineering-Green &amp; Brownfield</b></p> <ul style="list-style-type: none"> <li>Legacy Plants Transformation</li> <li>Digital Twin and Simulators</li> <li>Automatic Packing Lines</li> <li>Automated Storage Solution</li> <li>Advanced Process Control</li> <li>Robots &amp; Co-bots</li> </ul>	<p><b>Sustainable Manufacturing</b></p> <ul style="list-style-type: none"> <li>Predictive Maintenance</li> <li>Overall Equipment Effectiveness (OEE) Solutions</li> <li>Asset Health, Reliability &amp; Integrity</li> <li>Digital Twin</li> <li>Plant Operational Safety</li> </ul>	<p><b>Product Engineering</b></p> <ul style="list-style-type: none"> <li>AI Enabled Smart Energy Solutions</li> <li>Renewable power sourced Data Centers</li> <li>Zero Energy Infrastructure Technology</li> <li>Carbon Capture and Green Hydrogen Generation</li> <li>Alternate Fuel Technology</li> </ul>	<p><b>Energy Transition</b></p> <ul style="list-style-type: none"> <li>Conventional PDLC programs</li> <li>General Manufacturing and Services activities</li> <li>Asset and content management programs</li> </ul>
	<p><b>Plant Modernization &amp; Automation</b></p> <ul style="list-style-type: none"> <li>Emission Reduction</li> <li>Energy Transition</li> <li>Energy &amp; Water Mgmt.</li> <li>Hydrogen</li> <li>Circular Economy</li> </ul>	<p><b>Digital Technology</b></p> <ul style="list-style-type: none"> <li>Project Consultancy</li> <li>E/EP/EPCm Projects across O&amp;G, Chemicals, FMCG and Adjacent Domains</li> <li>Facility and Large Project</li> <li>Pre-FEED, FEED, DED Services</li> <li>Standards/Procedures Optimization</li> </ul>	<p><b>Manufacturing Modernization</b></p> <ul style="list-style-type: none"> <li>Robotics &amp; Automation</li> <li>Additive Manufacturing &amp; Re-Engineering</li> <li>Paperless Factory</li> <li>Upgradation of Legacy assets</li> </ul>	<p><b>Alt+Shift to Platform Solutions</b></p> <ul style="list-style-type: none"> <li>Data Engineering and Analytics for Env. Impact Analysis</li> <li>Digital Platform and Appn. Engg</li> <li>Embedded Sustenance Programs – Obsolescence Mgmt.</li> <li>Digital Twin and Connected Products</li> </ul>

**Assets**

- 240+ Global Clients**
- 30+ Labs**
- 695+ Patents**
- 6/10 G-ER&D 100**

**Solutions / Labs**

- Power Electronics Lab/Power Tools Lab*
- Motor Controls Lab/Machine Vision Lab*
- EV Charging Infra*
- ESM/ARC*
- CoE for i3PDS*

# Tech

## Industry Verticals:



Medical



Semcon



Consumer & Media



Telecom



Software & Platforms

## Tech Trends



Microfluidics, MEMS



Control systems & Robotics



HPC



Immersive-reality Technologies



Cyber security



Network Automation

## Strategic Focus Areas

### Medical

#### Device Engineering

- Product design services
- Value Engineering
- Sustenance support

#### Digital Health

- App & platform Engineering
- AI & Analytics
- DevSecOps

### Tech

#### Silicon Engineering

- Next Gen data center chip designs for hyperscalers
- Embedded engineering for cutting edge devices
- Pre & Post silicon validation
- Turnkey SoCs- 3, 4 and 5 nm

#### Device Engineering

- Device Certification
- Product derivatives
- End – to – End product development
- Android adaption across devices

#### QARA

- Regulatory compliance
- QMS support
- Complaints management

#### Digital Manufacturing

- Plant transfer/ consolidation
- Automation
- Supply chain management

#### Platform Engineering

- Embedded AI
- AI PC applications engineering
- Video & OTT services framework
- AI based predictive maintenance, network optimization
- Digital Twins: Mobile tower twin
- DevSecOps Platform

#### System Integration & Roll outs

- Network rollouts and support through NOS/SOC
- Large turn-key deployments for rural connectivity in India

Assets



240+ Global Clients



40+ Labs



630+ Patents



8/10 G-ER&D 100

Solutions / Labs

Wet lab, S/w defined Endoscope, visualization

Hardware Lab/ Silicon Validation Lab

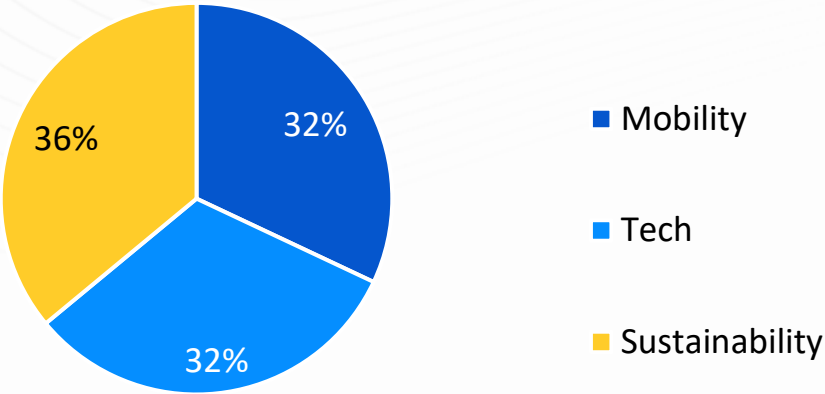
Media Devices Lab/ 5G Lab

Alexa Voicification Lab, Android XTS lab-2

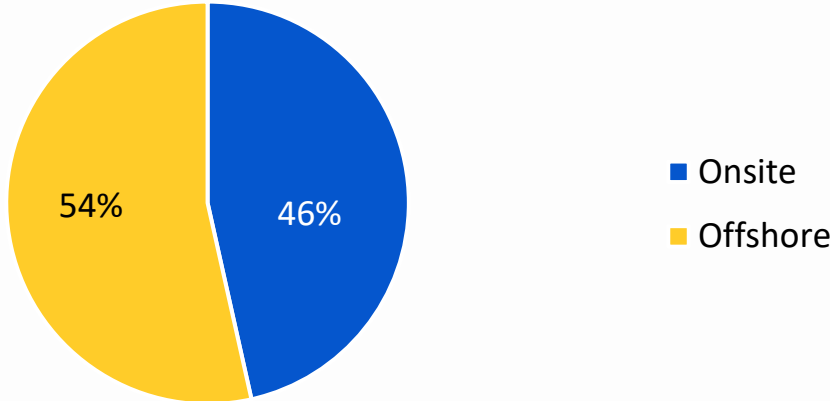
NOC, SOC

# Diversified Business Mix

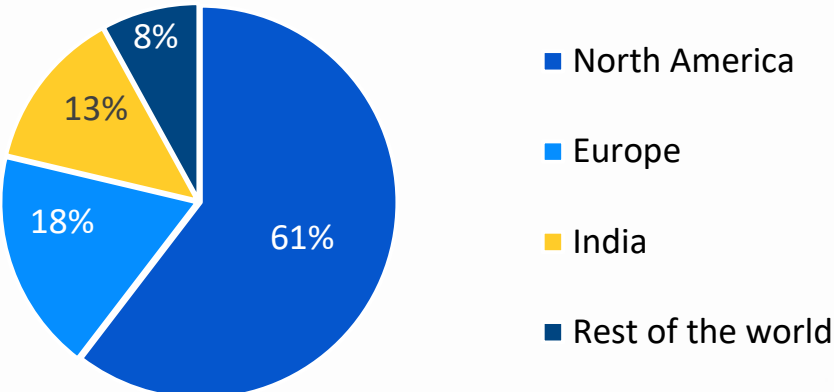
### By Vertical



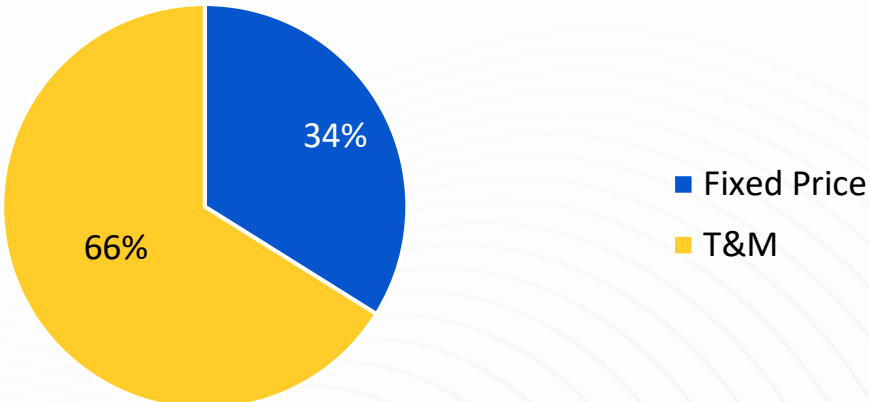
### Onsite vs. Offshore Split



### By Geography



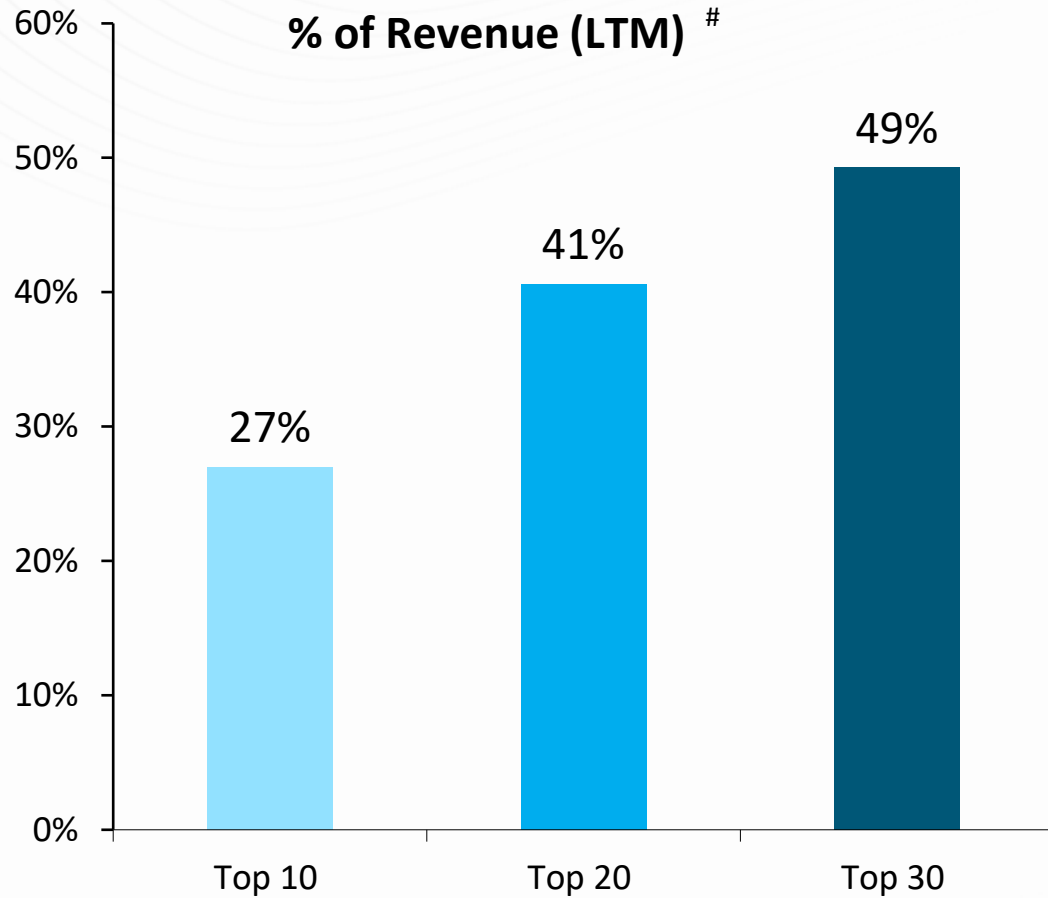
### Fixed Price vs. T&M



All Figures Based on Q4FY26  
(Continuing Operations)

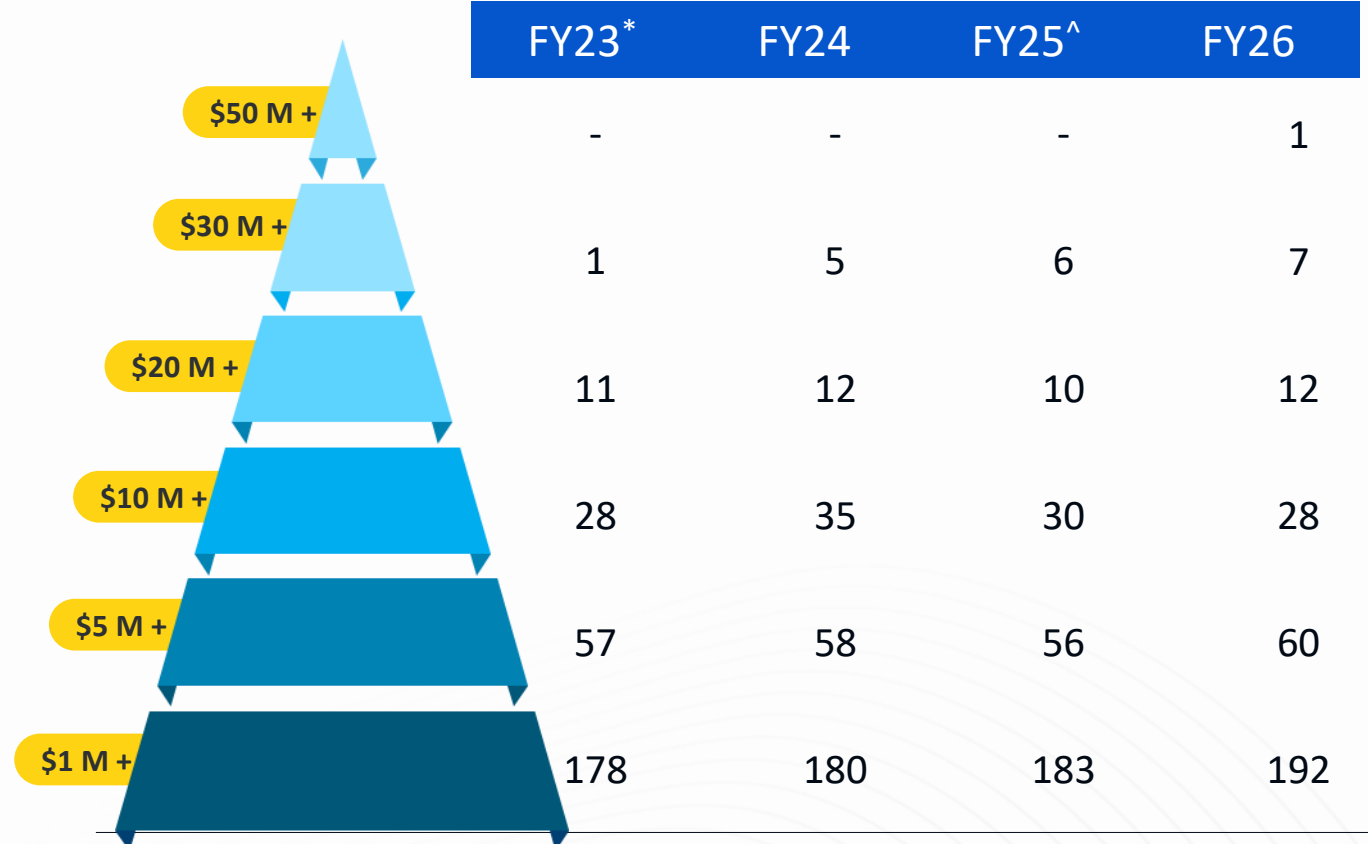
# Diversified Customer Base

## Top Clients Contribution



# As on Q4FY26 (Continuing Operations)

## Scale-up of million-dollar clients



\*Effective April 1, 2023, LTTS completed the acquisition of Smart World & Communication (SWC) Business of L&T. In compliance with Ind AS requirements applicable to common control transactions, FY23 financials have been restated to include SWC.

^SWC business has been classified as discontinued operation from the quarter ended 31st March, 2026. Accordingly, FY25 have been restated to reflect continuing operations.

# Large Deals Engine



## Higher Addressable Market

- **Shortening technology cycles** and need for faster speed-to-market and optimal cost structures
- **Investments in New age technologies** leading to deeper partnerships with customers
- **New Segment strategy** for faster decision making and deeper domain expertise



## Improve Win Ratio

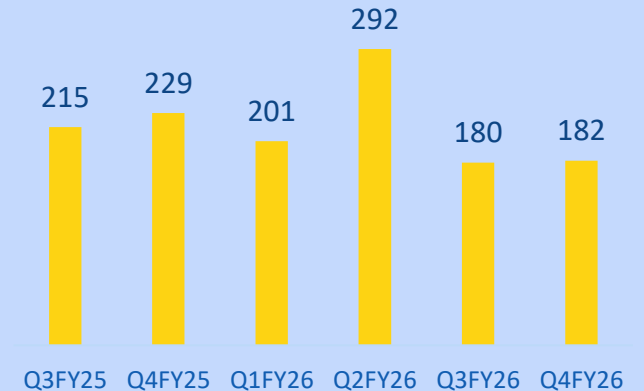
- **Track record** of large deal execution in ER&D
- **End to end capabilities** to support entire product lifecycle
- **Domain expertise and Cross-Poll!novation** to bring out customized solutions and accelerators



## Pipeline and Deal Size

- **FY26:** Total large deal wins at \$855 Mn, up 40% over the previous year

### LD TCV (\$ Mn)



**Q4 FY26: Sixth consecutive quarter of average USD 200+ Mn large deals TCV**

# Performance Highlights

FY21	FY22	FY23*	FY24	FY25^	Parameters	FY26
737	880	1,089	1,164	1,138	Revenue from Operations (USD mn)	1,233
54,497	65,697	88,155	96,473	96,422	Revenue from Operations (INR mn)	1,09,959
14.5%	18.3%	17.3%	17.1%	15.4%	EBIT Margin	14.5%
6,633	9,570	12,121	13,037	11,932	Net Income (INR mn)	12,818
12.2%	14.6%	13.7%	13.5%	12.4%	Net Income Margin	11.7%
63.3	90.9	114.8	123.3	112.7	Earnings Per Share (INR)	115.9
22.0	35.0	45.0	50.0	55.0	Dividend Per Share (INR)	58.0
21%	25%	28%	27%	22%	Return on Equity (RoE)	20%

\*Effective April 1, 2023, LTTS completed the acquisition of Smart World & Communication (SWC) Business of L&T. In compliance with Ind AS requirements applicable to common control transactions, FY23 financials have been re-stated to include SWC.

^SWC business has been classified as discontinued operation from the quarter ended 31st March, 2026. Accordingly, FY25 have been restated to reflect continuing operations.

# Financial Performance for Continuing Operations\* – Q4 FY26

Amount in ₹ million

Income Statement	Q4 FY25	Q3 FY26	Q4 FY26	QoQ	YoY	FY25	FY26	YoY
Revenue	26,378	27,872	28,579	2.5%	8.3%	96,422	1,09,959	14.0%
Cost of sales	18,605	19,315	19,384			66,973	76,413	
<b>Gross Profit</b>	<b>7,773</b>	<b>8,556</b>	<b>9,195</b>	<b>7.5%</b>	<b>18.3%</b>	<b>29,449</b>	<b>33,546</b>	<b>13.9%</b>
Selling, General & Administration Expenses	3,446	3,571	3,980			11,551	14,195	
<b>EBITDA</b>	<b>4,327</b>	<b>4,985</b>	<b>5,214</b>	<b>4.6%</b>	<b>20.5%</b>	<b>17,897</b>	<b>19,350</b>	<b>8.1%</b>
Depreciation & Amortisation	809	861	865			3,031	3,452	
<b>EBIT<sup>^</sup></b>	<b>3,518</b>	<b>4,124</b>	<b>4,349</b>	<b>5.5%</b>	<b>23.6%</b>	<b>14,866</b>	<b>15,898</b>	<b>6.9%</b>
Other Income, net	332	184	383			1,528	1,571	
Income tax expense	1,055	1,120	1,260			4,494	4,632	
Minority Interest	-9	5	6			-32	19	
<b>Net Income from continuing operations<sup>^</sup></b>	<b>2,804</b>	<b>3,183</b>	<b>3,467</b>	<b>8.9%</b>	<b>23.6%</b>	<b>11,932</b>	<b>12,818</b>	<b>7.4%</b>
Net Profit/(loss) from discontinued operations	307	108	127			736	511	
<b>Net Income</b>	<b>3,111</b>	<b>3,026</b>	<b>3,321</b>	<b>9.7%</b>	<b>6.8%</b>	<b>12,667</b>	<b>12,792</b>	<b>1.0%</b>
<b>Margins (%)</b>								
Gross Margin	29.5%	30.7%	32.2%			30.5%	30.5%	
EBITDA Margin	16.4%	17.9%	18.2%			18.6%	17.6%	
EBIT Margin	13.3%	14.8%	15.2%			15.4%	14.5%	
Net Income Margin (from continuing operation)	10.6%	11.4%	12.1%			12.4%	11.7%	
<b>Earnings Per Share (INR)</b> <b>(For Continuing &amp; Discontinued Operations)</b>								
Basic	29.38	28.56	31.34			119.70	120.71	
Diluted	29.32	28.52	31.29			119.44	120.53	

\*SWC business has been classified as discontinued operation from the quarter ended 31st March, 2026. Financial results have been restated to reflect continuing operations accordingly

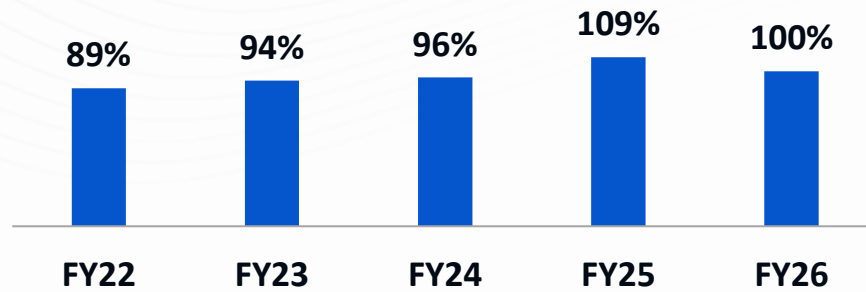
<sup>^</sup>EBIT & Net income from continuing operation excludes one-time exceptional item: Q3 FY26 – New wage code – Net Rs. 26.5 Cr; Q4 FY26 – Restructuring cost – Net Rs. 27 Cr

# Financial Performance – Q4 FY26

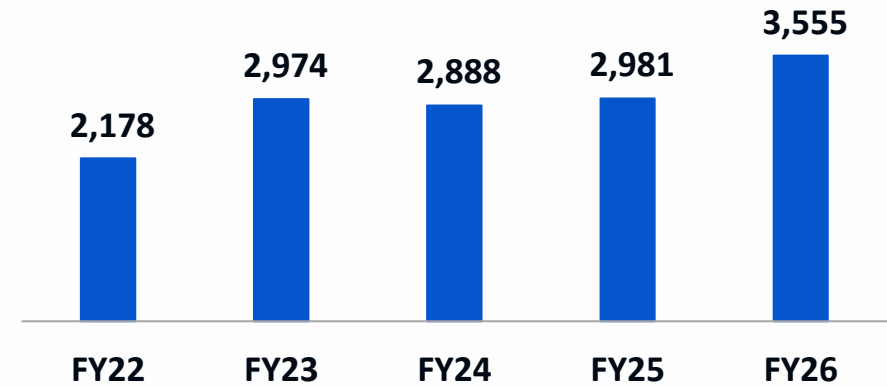
Amount in ₹ million			Amount in ₹ million		
Balance Sheet	As at 31-MAR-25	As at 31-MAR-26	Cash Flow Summary	FY25	FY26
<b>Assets</b>					
Property and equipment	9,063	8,703	Net cash provided by operating activities	14,811	14,551
Intangible Assets and Goodwill	13,667	13,917	Less: Capex	1,018	1,749
Accounts Receivable	29,165	23,764	<b>Free Cash Flow</b>	<b>13,793</b>	<b>12,802</b>
Unbilled Revenues	5,953	4,997	Free Cash Flow to Net Income (%)	109%	100%
Investments	13,096	18,965			
Cash and Cash equivalents	15,658	16,505			
Other current assets	4,262	4,241			
Other non-current assets	5,571	3,926			
Asset held for sale	-	9,871			
<b>Total Assets</b>	<b>96,435</b>	<b>1,04,889</b>			
<b>Liabilities and Shareholders' Equity</b>					
Shareholders' Funds	60,800	64,727			
Other current liabilities	29,900	25,715			
Other non-current liabilities	5,560	7,611			
Liabilities linked with asset held for sale	-	6,641			
Minority Interest	175	195			
<b>Total Liabilities</b>	<b>96,435</b>	<b>1,04,889</b>			

# Creating Shareholder Value

### Free Cash Flow (as a % of Net income)

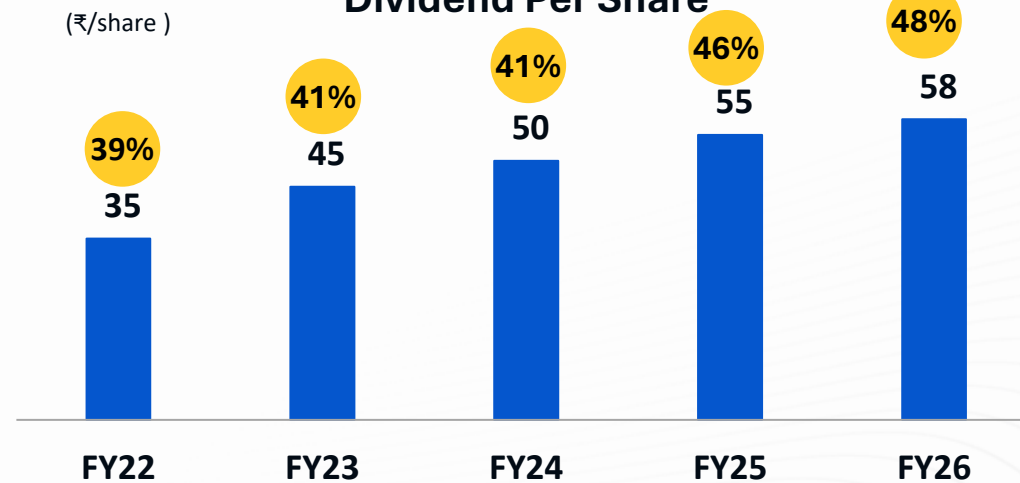


### Cash Position\* (₹ Cr.)



\* Investments + Cash equivalents

### Dividend Per Share



xx% Annual Dividend Payout Ratio

# Innovation: Labs & Case Studies





**Electric Vehicle Lab**

Our lab features cutting-edge equipment for testing EV components up to 1200V & 1000A, capable of adhering to a range of standards



**FactoryNext™ Lab**

Enables solutions that empower global manufacturers and OEMs to accelerate next-gen product development and drive solution deployments



**5G Lab**

Focused on for 5G development, NFV Benchmarking, Validation and Design services



**HW & HIL Lab**

HW & HIL Lab with capabilities to build embedded prototypes, board-level and unit level testing



**1DIGITALPLACE, Illinois**

Leverages next generation manufacturing technologies to enable customers redefine their product journeys – from concept development through launch.



**Power Lab**

Focused on Power electronics and hardware design testing and verification

**98**

**INNOVATION LABS**

Supporting focused investment areas



Technology labs



Compliance testing labs



Industry specific labs



Design studio



96% object annotation accuracy achieved

# Enabling Autonomous Drive: High-Accuracy Data Labeling

## THE CHALLENGE

The ability to correctly identify environmental objects and take corrective actions is a key function of an autonomous vehicle. Data annotation helps an autonomous vehicle with just that. Our customer was developing an autonomous vehicle platform that would enable next-generation (level 3+) autonomous features in a new series of self-driving vehicles.

## WHAT WE ENABLED

- Development of a labeled database and annotate objects in various environments including rain, snow, low light, and so on to train a vehicle perception model to identify objects in different environmental scenarios.
- Defining the quality matrix for the labeled database to bring standardization and uniformity to labeled data/annotated frame delivery and improve productivity
- Development of an automation tool with AI-based quality assurance and training modules for labeled data validation and correction.

## OUR EDGE

- In-House GenAI enabled Annotation Tool
- Expertise in AD & ADAS Annotation Development

# Next Gen Ultrasound System

## THE CHALLENGE

The goal of this project was to design and develop advanced ultrasound probe port selector switching boards, including configurations for one-to-four, one-to-three, and one-to-one port selectors. The project demanded precision in hardware design, schematics, and PCB development to ensure reliable switching using 1-4 latching relays as the basic element for analog channel switching. Robust testing and evaluation were essential to achieve optimal performance and compatibility with ultrasound systems.

## WHAT WE ENABLED

- ✓ Designed and developed port selector boards with one-to-four and one-to-three ultrasound ports, along with a rigid flex cable for single-port functionality.
- ✓ Implemented comprehensive schematics design and PCB layout development using Mentor Graphics tools, ensuring high-quality and efficient hardware architecture.
- ✓ Conducted rigorous bring-up, testing, and evaluation processes to validate performance and reliability of the switching boards in real-world scenarios.

## OUR EDGE

With expertise in analog hardware design and hands-on proficiency in tools like Mentor Graphics xDX Designer and Expedition, we delivered innovative and reliable ultrasound probe selector solutions. Our methodical approach to schematics, PCB development, and testing ensured seamless integration and performance, contributing to the advancement of next-generation ultrasound systems with precision and dependability.





104 critical events across 12 plants  
identified saving ~\$10 Mn USD in a year

Harnessing predictive maintenance:

# Saved Millions with AI & Analytics

## THE CHALLENGE

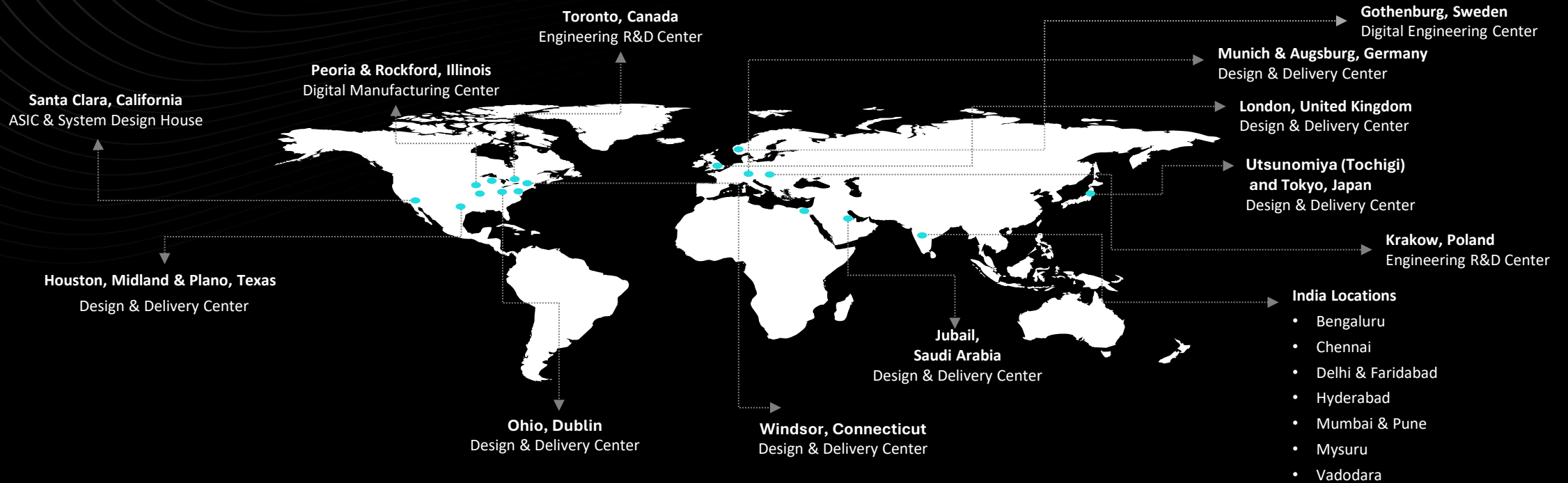
The client, a leading global petrochemical major, sought predicting & minimizing equipment malfunctions. Their legacy setup, however, could not proactively address asset breakdowns or plant shutdowns with an appropriate lead time. A lack of effective monitoring for critical Key Performance Indicators (KPIs) further led to operational inefficiencies.

## WHAT WE ENABLED

- / An AI advisory decision support system that employs Machine Learning (ML) for detecting anomalies.
- / An individualized anomaly detection models specifically designed for each critical asset.
- / An AI solution that processes live data while incorporating historical and contextual data for anomaly detection.
- / sensor-based classifiers to generate timely alerts for any detected anomalies or failures.
- / 20% reduction in equipment downtime & 15% increase in plant productivity

## OUR EDGE

- / Our deep domain expertise in the digital transformation of process industries.
- / Our proprietary in-house solution, the Asset Health Framework.



## ABOUT L&T TECHNOLOGY SERVICES

L&T Technology Services (LTTS) is a global leader in engineering and technology services. A listed subsidiary of Larsen & Toubro (L&T), we offer design, development, testing, and sustenance services across products and processes.

**Purposeful. Agile. Innovation.** is how we drive growth across the Mobility, Sustainability, and Tech segments. Our customer base includes 69 Fortune 500 companies and 57 top ER&D companies across industrial products, medical devices, transportation, telecom & hi-tech, and process industries. Headquartered in India, we have over 23,800 employees across 22 global design centers, 31 global sales offices, and 98 innovation labs, as of March 31, 2026.

For additional information about L&T Technology Services log on to <https://www.LTTS.com/>

For more information please contact:

**Sandesh Naik**

Head, Investor Relations

Email: [Sandesh.naik1@LTTS.com](mailto:Sandesh.naik1@LTTS.com)